



P-NS 20 BHD



# N 4000/5000/6000

Stud diameter: 5 mm - 25 mm, with through deck welding applications up to 22 mm

### Welding duty cycle, depending on application

#### Nelweld 4000

ø 22 mm - 4 per min.  
ø 5 mm - unlimited

#### Nelweld 5000

ø 25 mm - 5 per min.  
ø 8 mm - unlimited

#### Nelweld 6000

ø 25 mm - 10 per min.  
ø 10 mm - unlimited

### Technical data

#### Model

Welding current  
Supply voltage

Fuse

Power plug

Degree of protection

Welding time

Enclosure dimensions

Weight

#### Nelweld 4000

300 - 2100 continuously adjustable  
400 V standard, 50/60 Hz  
Special voltages optional

63 A delay-action

63 A CEE (125 A)

IP23

20 - 1000 ms

610 H x 686 W x 850 D mm

330 kg

#### Nelweld 5000

300 - 2500 continuously adjustable  
400 V standard, 50/60 Hz  
Special voltages optional

125 A delay-action

125 A CEE

IP23

20 - 1500 ms

710 H x 786 W x 900 D mm

480 kg

#### Nelweld 6000

300 - 2500 continuously adjustable  
400 V standard, 50/60 Hz  
Special voltages optional

125 A delay-action

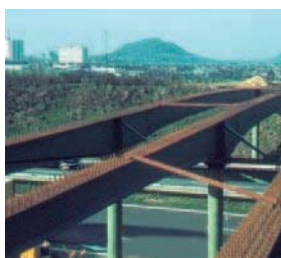
125 A CEE

IP23

20 - 1500 continuously adjustable

710 H x 786 W x 900 D mm

480 kg



NELSON head stud in bridge building



Through deck welding technology in composite construction



Drawn-arc welding stud



Threaded stud / macro-examination specimen